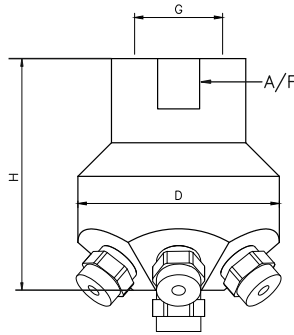
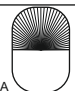
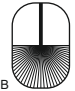
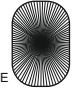


EJ Fixed Tank Washing Spray Nozzles Stainless Steel & Plastic Versions



Suitable for washing of thick kind of materials. Having multiple spray tips on peripheri which can provides upto 360° of spray coverage. Rigid construction. M.O.C SS316, SS304.



Coverage Type	Spray Angle
	180°
	180°
	360°

MODEL NO.	SPRAY ANGLE	CONNECTION	FLOW CAPACITY IN LPM AT DIFFERENT PRESSURE						G/A DIMENSION. MM	
			FLOW CAPACITY (US GPM)	PRESSURE [BAR]						
				1 1/2"	40° psi	1.5	2	3	5	7
EJ3.100	A/B/E	●	30.65	86.60	100.0	122.47	158.11	187.08	121	127
EJ3.140	A/B/E	●	42.91	121.24	140.0	171.46	221.36	261.92	Weight (Metals) = 1.7kg. Approx	
EJ3.190	A/B/E	●	58.24	164.54	190.0	232.70	300.42	355.46		

End Connection : X – BSP, Y - BSPT, Z – NPT Available.

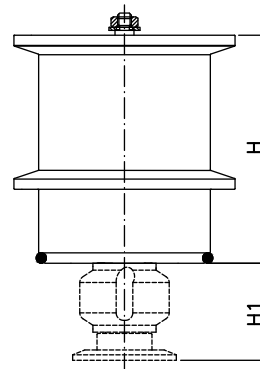
Male Connection On Request

EK Series Self Rotating Pop-Out Nozzle




EK series Self-retractable (Pop out) nozzles are best suitable for applications where the complete flush position is required. It is generally used the areas where the nozzle can get blocked or when the environment is contaminated or explosive.

EK series Pop out nozzle retracts its spray ball when pressure is applied and shut itself to complete flush position when operation is stopped.



2" TC (DIN32676-A DN50)

Coverage Type	Spray Angle
	270°

MODEL NO.	SPRAY ANGLE	CONNECTION	FLOW CAPACITY IN LPM AT DIFFERENT PRESSURE					G/A DAIMENTION	
			Tri-Clamp	PRESSURE [BAR]					
				1.5	2	3	5	7	H
EK2.200	D	2" TC	17.32	20.0	24.49	31.62	37.42	66	28
EK2.250	D	2" TC	21.65	25.0	30.62	39.53	46.77	Weight (Metals) = XX Approx	
EK2.300	D	2" TC	25.98	30.0	36.74	47.43	56.12		
EK2.350	D	2" TC	30.31	35.0	42.87	55.34	65.48		
EK2.400	D	2" TC	34.64	40.0	48.99	63.25	74.83		

* Note: Connections are available in threaded and TC end.