

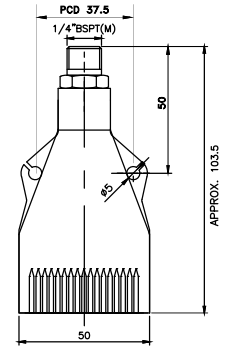
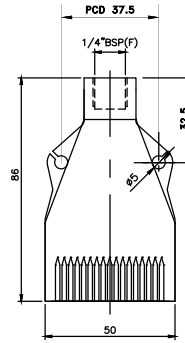
# CJ Series Flat Spray Nozzles For Air Knife Nozzles



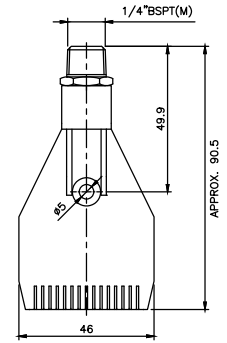
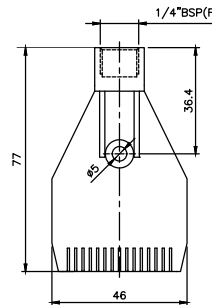
Multi channel flat air spray nozzle have been specially designed for high impact of compressed air with attenuate noise, to obtain an intensive, precise blowing power to minimize cost by reducing air consumption.



ALUMINIUM



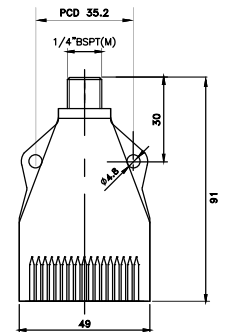
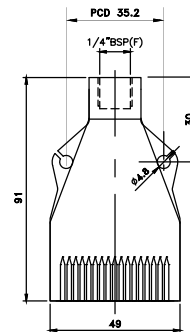
STEEL



ABS



ABS



MOC	MODEL NO.	CONNECTION END		ORIFICE SIZE (mm)	FLOW CAPACITY IN Nm <sup>3</sup> /hr AT DIFFERENT PRESSURE					WEIGHT (gram)
		1/4"	1/4"		PRESSURE [BAR]					
		(MALE) BSP	(FEMALE) BSP		1	2	3	4	5	
ABS	CJ08.P11.XBM	●		0.8	17	22	27	31	-	MALE : Weight = 18 gms. Approx
	CJ08.P11.XBF		●	0.8	17	22	27	31	-	FEMALE : Weight = 16 gms. Approx
	CJ10.P11.XBM	●		1.0	17	22	27	31	-	
	CJ10.P11.XBF		●	1.0	17	22	27	31	-	
ALUMINIUM	CJ08.M6.XBM	●		0.8	18	23	28	32	37	MALE : Weight = 78 gms. Approx
	CJ08.M6.XBF		●	0.8	18	23	28	32	37	FEMALE : Weight = 70 gms. Approx
	CJ10.M6.XBM	●		1.0	18	23	28	32	37	
	CJ10.M6.XBF		●	1.0	18	23	28	32	37	
SS 304	CJ08.M1.XBM	●		0.8	27	33	42	55	70	MALE : Weight = 127 gms. Approx
	CJ08.M1.XBF		●	0.8	27	33	42	55	70	FEMALE : Weight = 112 gms. Approx
	CJ10.M1.XBM	●		1.0	27	33	42	55	70	
	CJ10.M1.XBF		●	1.0	27	33	42	55	70	
SS 316	CJ08.M2.XBM	●		0.8	27	33	42	55	70	MALE : Weight = 127 gms. Approx
	CJ08.M2.XBF		●	0.8	27	33	42	55	70	FEMALE : Weight = 112 gms. Approx
	CJ10.M2.XBM	●		1.0	27	33	42	55	70	
	CJ10.M2.XBF		●	1.0	27	33	42	55	70	

End Connection : X – BSP, Y - BSPT, Z – NPT Available.

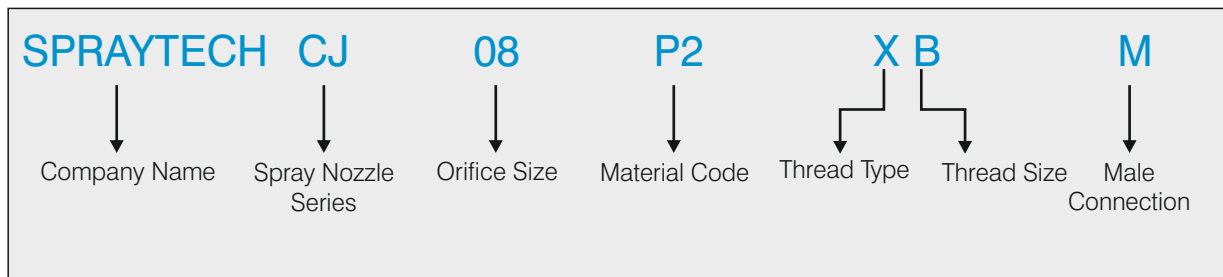
# CJ Series Flat Spray Nozzles For Air Knife Nozzles

## Air Knife Nozzles



The following description will help to explain our Part Number/ Code in relation to the “SPRAYTECH” Spray Nozzle.

### EXAMPLE ORDERING.



### SPRAY CHARACTERISTICS

Produces a flat pattern of high impact compressed air.

### FEATURES

- With its multiple orifices a volume of compressed air is converted into a high speed stream with uniform distribution and good spray pattern.
- Low noise levels which are under OSHA standard.
- Low air consumption.
- Can be mounted side by side to produce an effective air curtain.

### TYPICAL APPLICATIONS

- Cooling
- Warming
- Drying
- Cleaning, Wipping
- Moving of Parts

#### ORIFICE SIZE

- 08 = 0.8mm
- 10 = 1.0mm

#### MATERIAL

P2 = PP (Polypropylene)  
M1 = SS304 / SS303  
M6 = Aluminum

#### THREAD TYPE

- X=BSPP
- Y=BSPT
- Z=NPT

#### THREAD SIZE

- B=1/4"