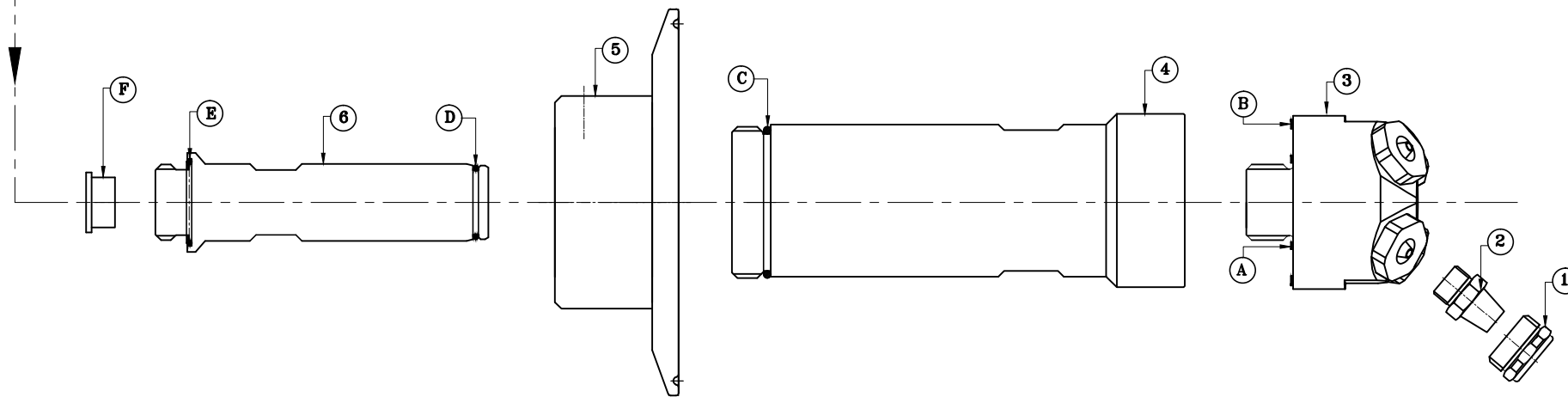
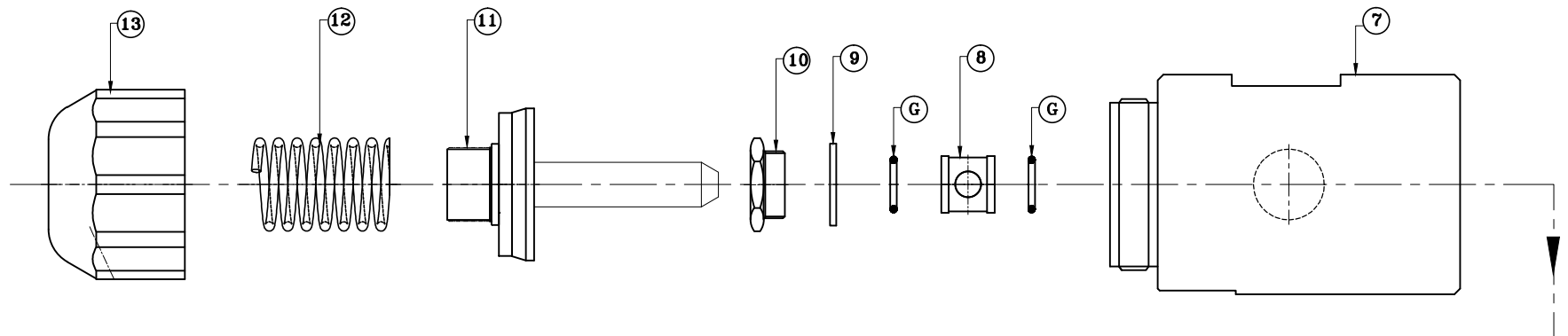
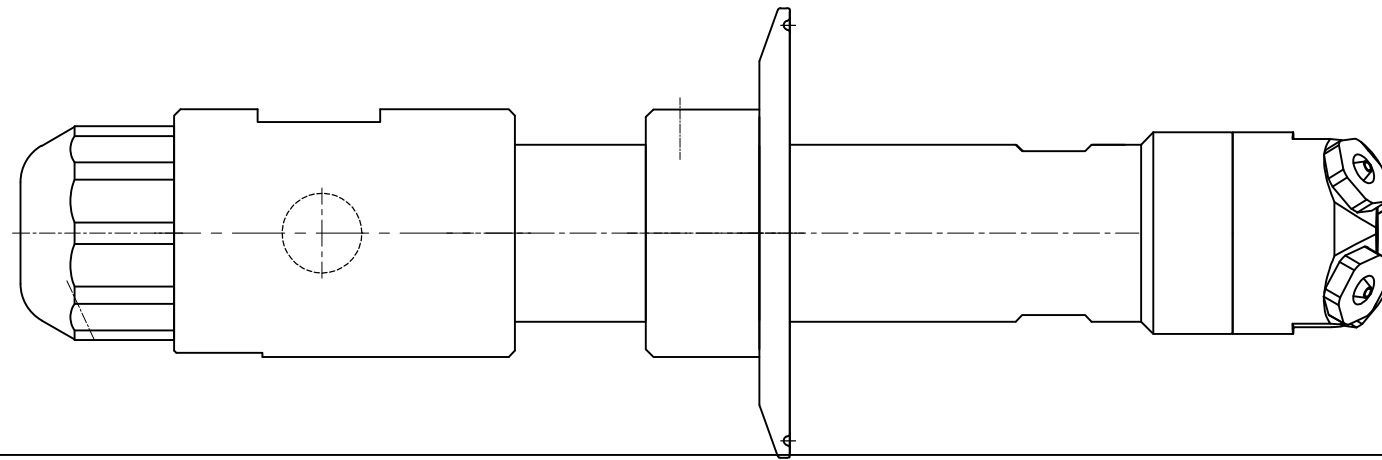


PART NO	ITEM ID	PART NAME	MOC.	QTY.
1	AC.GL400.M2L	AIR CAP	SS316L	04
2	LN.GL400.M2L	LIQUID NOZZLE	SS316L	04
3	HB.GL400.M2L	HEAD BLOCK	SS316L	01
4	AEX.GL400.M2L	AIR EXTENSION	SS316L	01
5	MF.GL400.M2L	MOUNTING FERRULE	SS316L	01
6	LEX.GL400.M2L	LIQUID EXTENSION	SS316L	01
7	CB.GL400.M2L	CHAMBER BLOCK	SS316L	01
8	SPACER.GL400.P3	SPACER	PTFE	01
9	GSK.GL400.P3	GASKET	PTFE	01
10	RT.GL400.M2L	'O'RING RETAINER	SS316L	01
11	NA.GL400.M2L	NEEDLE ASSEMBLY.	SS316L/ PTFE	01
12	SP.GL400.M2L	NEEDLE SPRING	SS316L	01
13	EC.GL400.M2L	END CAP	SS316L	01

NOTE:- STANDARD ORIFICE SIZE FOR LIQUID NOZZLE (MM)
0.5, 1.0, 1.5, 2.0, 2.5, 3.0, 3.5, 4.0, 4.5, 5.0
CONFIRM WO.NO OF SPRAY GUN BEFORE ORDERING

PART NO	SEAL KIT	PART REFERENCE	MOC.	QTY.
A	HEAD BLOCK (ATOM AIR SEALING)	SILICONE	01	
B	HEAD BLOCK (LIQUID SEALING)	SILICONE	01	
C	AIR EXTENSION (REAR)	VITON FG	01	
D	LIQUID EXTENSION (FRONT)	VITON FG	01	
E	LIQUID EXTENSION (REAR)	VITON FG	01	
F	SEAL	PTFE	01	
G	SPACER 'O' RING	VITON FG	02	
OR.GL400		1 SET = 08 SEALS		



ALL DIMENSIONS ARE IN mm UNLESS OTHERWISE SPECIFIED							
IF IN DOUBT PLEASE ASK			MACHINING TOL. UNLESS SPECIFIED				
▽▽▽	GROUND FINISH	ANGULAR DIMS.	LINEAR DIMS.				
▽▽	SMOOTH FINISH	OVER UPTO	TOL.	OVER UPTO	TOL.	TOL.	
▽	ROUGH FINISH	1	6	±6'	-	6	±0.1
⊕	SCALE:	6	30	±10'	6	30	±0.2
	N.T.S.	30	120	±20'	30	120	±0.3
		120	360	±30'	120	315	±0.5
		M.O.C.: -		315	1000	±0.8	
		DRN.	ARTI	DATE	02/03/21		
		CHK.	RUSHI	SIGN			
REV	DATE	DESCRIPTION	APPD.	B.A.K.	SIGN		

Spraytech[®]
Systems (India) Pvt. Ltd.

TITLE: GL400
RMG SPRAY LANCE PART LIST
(FOUR HEAD)

MODEL NO: GL400

DWG. NO. : SPR.DS.RMGL.1094.03.21

PAGE:
1 OF 1

REV.:
0

This document is property of M/s. SPRAYTECH SYSTEMS (INDIA) PVT. LTD. Passing on and copying of this document, Utilization and communication of its contents are prohibited unless expressly authorized. Offenders will be liable for damages.