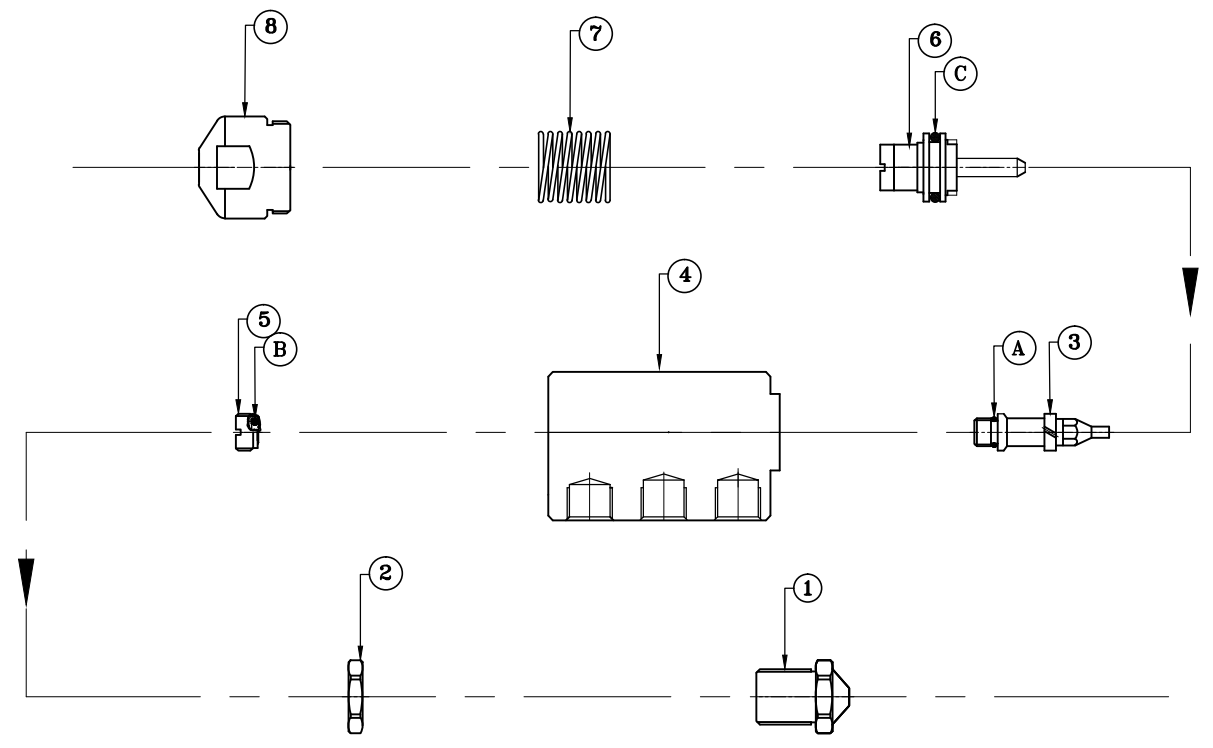
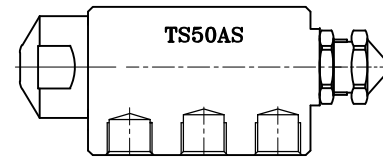


PART NO	ITEM ID	PART NAME	MOC.	QTY.
1	REFER TABLE NO.1	AIR CAP	SS316L	01
2	RN.TS50AS.M2L	AIR CAP RETAINER	SS316L	01
3	REFER TABLE NO.1	LIQUID NOZZLE	SS316L	01
4	CB.TS50AS.M2L	CHAMBER BLOCK	SS316L	01
5	NG.TS50AS.M2L	NEEDLE GLAND	SS316L	01
6	NA.TS50AS.M2L	NEEDLE ASSEMBLY.	SS316L	01
7	SP.TS50AS.M2L	NEEDLE SPRING	SS316L	01
8	EC.TS50AS.M2L	END CAP	SS316L	01

TABLE NO.:1

SIZE	LIQUID NOZZLE MODEL	AIR CAP MODEL
0.5	LN05.TS50AS.M2L	AC10.TS50AS.M2L
0.8	LN08.TS50AS.M2L	
1.0	LN10.TS50AS.M2L	
1.2	LN12.TS50AS.M2L	AC15.TS50AS.M2L
1.5	LN15.TS50AS.M2L	
1.8	LN18.TS50AS.M2L	

PART NO	SEAL KIT PART REFERENCE	MOC.	QTY.
A	LIQUID NOZZLE	VITON	01
B	NEEDLE GLAND 'O' RING	VITON	01
C	PISTON 'O' RING	VITON	01
MODEL NO.: -OR.TS50AS.FPM		1 SET = 3 'O'RINGS	



ALL DIMENSIONS ARE IN mm UNLESS OTHERWISE SPECIFIED					
IF IN DOUBT PLEASE ASK			MACHINING TOL. UNLESS SPECIFIED		
▽▽▽	GROUND FINISH	ANGULAR DIMS.	LINEAR DIMS.	OVER UPTO	TOL.
▽▽	SMOOTH FINISH	1	6	±6'	- 6 ±0.1
▽	ROUGH FINISH	6	30	±10'	6 30 ±0.2
⊕	SCALE:	30	120	±20'	30 120 ±0.3
		120	360	±30'	120 315 ±0.5
		M.O.C.:	SS316L	315	1000 ±0.8
		DRN.	ARTI	DATE	13/09/21
		CHK.	RUSHI	SIGN	
REV	DATE	DESCRIPTION	APPD.	B.A.K.	SIGN



TITLE:		FBP BOTTOM SPRAY GUN PART LIST (SINGLE HEAD)
MODEL NO:	TS 50AS	PAGE: 1 OF 1
DWG. NO. :	SPR.TSN.PL.09.21	REV.: 0

This document is property of M/s. SPRAYTECH SYSTEMS (INDIA) PVT. LTD. Passing on and copying of this document, Utilization and communication of its contents are prohibited unless expressly authorized. Offenders will be liable for damages.